

А С И В А Д Е М CITYCLINIC

УНИВЕРСИТЕТСКА БОЛНИЦА

Report for sustainability 2025

The material us questions

Through active engaging different groups interested countries and analysis of internal and external data, IHH Healthcare Berhad identifies the topics they have biggest importance for both business and society .

This assessment helps us guide its resources to the areas with the strongest social, environmental and economic effect .

Through close cooperation with our diverse interested countries in the many geographical regions in which we operate , we we bring our sustainability strategy in line with the needs and expectations of our interested countries .
A climate change-related report is underway annually, constantly monitoring changes in risks, regulations and expectations of key groups related to our activities.

The following steps outline the processes , through which we passed through 2025 , for yes we arrive to the present us set from nine essential the question .



The material us questions

Materiality matrix



These pillars reflect the key ones areas in which Acibadem City Clinic has the largest impact and responsibility.

Patient pillar

We have grouped the following essentials questions in categories " Quality of Care " and Patient Care :

- Evidently based , safe and value-based oriented care
- Fast , efficient and empathetic care
- Transparency at billing and results

Employee pillar

•We have grouped the following essentials questions in the category " Well-being and development" employee safety and overall well - being

- People engagement and talent development

Public pillar

We have grouped the following essentials questions in " Addressing the problems of global healthcare ":

- Antimicrobial management means a
- Reducing the severity of diseases
- Emergency preparedness
- Access for disadvantaged communities is encompassed by corporate responsibility, which encompasses a broader range of social impact activities.

Pillar of the planet

We have grouped the following essentials questions in " Environmental Impact " environment and actions ":

- Carbon management emissions and energy consumption
- Waste management
- Management on the waters

Meaning for interested parties countries

1. Evidential based , safe and value-based oriented care

2. Privacy on data and cybersecurity

3 Fast , efficient and empathetic care

4 Safety on employees and overall well-being

5. Commitment on people and development on the talents

6 Transparency at billing and results

7 Preparation for extraordinary situations

8 Reduction on the weight on diseases

9 Corporate management and business ethics

10 Management of waste

11 Management on the waters

12. Management on antimicrobials means

13 Management on emissions and energy

14 Sustainable management on the chain for supplies

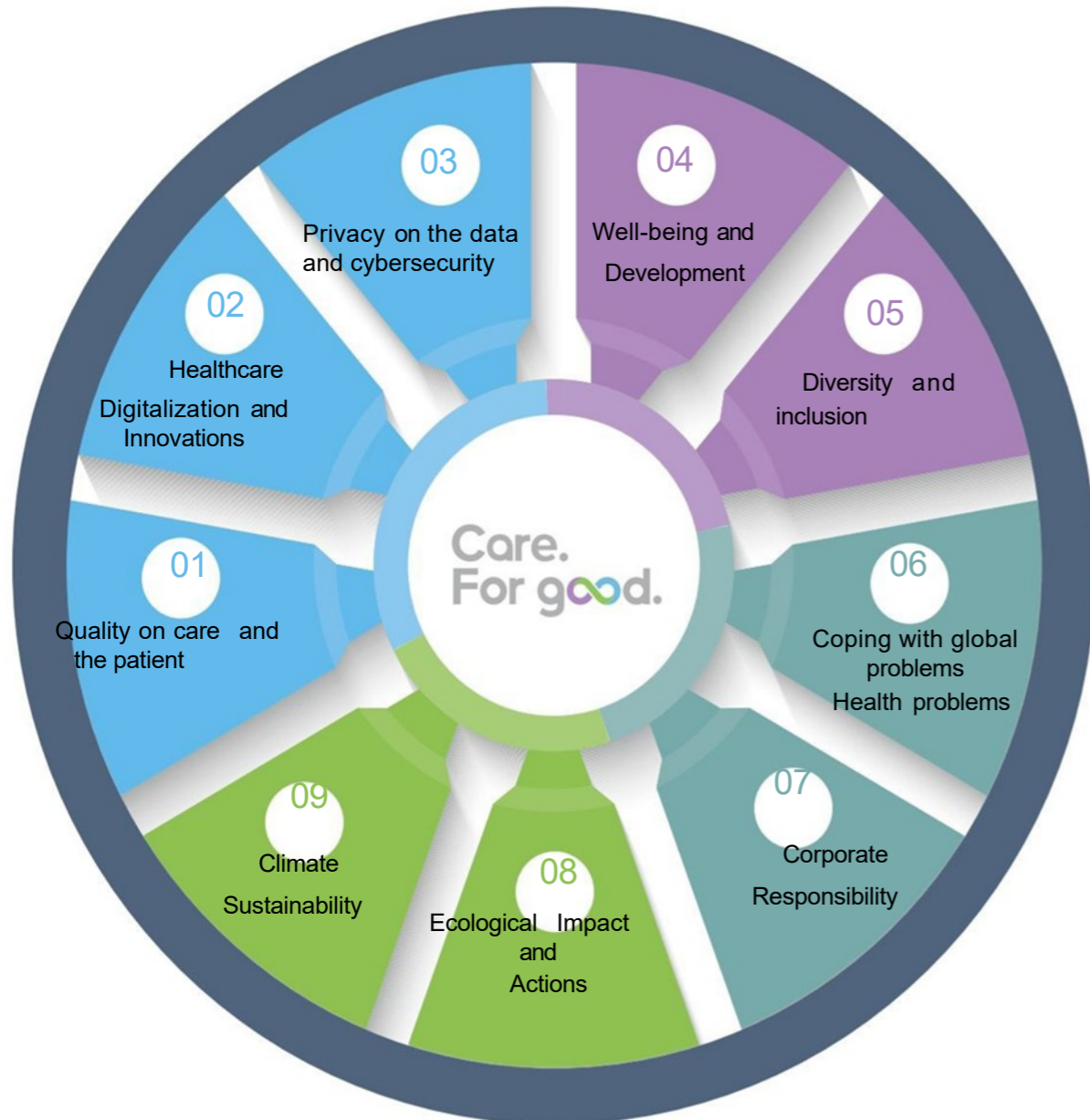
15 Digitalization and Innovation in Healthcare

16 Sustainability on the amendment on climate

17 Diversity and Inclusion

18 Access for communities in disadvantaged situation

The material us questions



Quality on care and care for the patient

- Based on evidence, safely and Care, founded on values
- Fast, efficient and empathetic care
- Transparency in billing and results

Digitalization on healthcare & Innovations

Provision on better quality care through improvement of digital and information opportunities and investing in innovative companies.

Privacy on the data and Cybersecurity

Protection on the law on the patients on privacy and protecting our operations from cyberattacks and violations on the data.

Well-being and development

- Safety on employees and complete well-being
- Engagement on the people and development on talents

Diversity and inclusion

Diversity and inclusion, especially in leadership roles, strengthen the synergy in the organization. The diverse visible points on employees stimulate creativity, innovations and satisfaction.

Coping with global problems Health problems

- Management of antimicrobials means
- Reduction on the weight on diseases
- Readiness for extraordinary situations

Corporate responsibility

Expansion on access to and insurance on qualitatively healthcare on communities in disadvantaged through free or subsidized initiatives.

Impact on the environment environment and actions

- Management of emissions and the energy
- Management on waste and the waters

Sustainability on climatic changes

- Climate control risks and opportunities
- Responsible supply

Strong management

Provision on accountability, transparency and ethical behavior through reliable systems, practices and policies, which yes us help yes achieve sustainability.

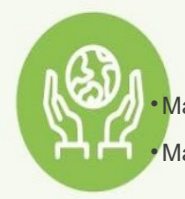


Planet

Protecting our planet

Protection on our planet

The material us questions



ENVIRONMENTAL IMPACT AND ACTIONS

- Management on emissions and energy
- Management of waste and water



CLIMATE RESILIENCE

- Climate control risks and opportunities
- Responsible supply

Goals on sustainable development of the UN



If healthcare was country , then would yes be the fifth by size source on greenhouse gases in the world . The sector is responsible for nearly 5% of world emissions of CO₂ and generates significant quantities waste .

Upright we are in front of the challenge yes we balance sustainability with the provision on high-quality care , so as conservation on health on people is inseparable related with health on the planet . As leading supplier of health services , we we carry responsibility yes stimulate the change and yes we protect our planet .

1. Impact on the environment environment and actions :

2. Sustainability on climatic changes .

These priorities reflect our strategic approach for reduction on ecological imprint and for preparation for the changing one is climate .

In the " Impact" section on the environment environment and actions " we describe how we manage emissions , we optimize consumption on energy , reduce waste and save water , in accordance with the purpose us for zero emissions by 2050

In " Sustainability" to the amendment on climate " we appreciate the future climatic risks , we analyze scripts and adapt the practices you , for yes defensible continuity on health care . Through responsibly supply we build sustainable , climate and social responsible chain for supplies .

Together these efforts confirm the commitment us for reduction on ecological imprint , achievement on the goal for zero emissions and construction on healthier and more sustainable future for communities , to which we have commitment

Highlights on planet in 2025



Scope 1

Up to 55%

Reduction on the use on desflurane on our basic markets

Desflurane is harmful for the environment environment anesthetic gas with potential for global warming , which is 2500 times worse from this one on carbon dioxide and 13 times worse from his/her alternative product , sevoflurane 2

Scope 2

↓ 3.2%

Intensity on emissions on bedridden patient

Hospitals they work around the clock and have on average 2.5 times higher consumption on energy from commercial buildings .

Waste

↓ > reduction

Plastics disposable * Increasingly large number studies show that microplastics already is found in vital We replaced the plastic cups with paper ones at ASK Vitosha .

1 Healthcare without harm . Climatic imprint on healthcare .

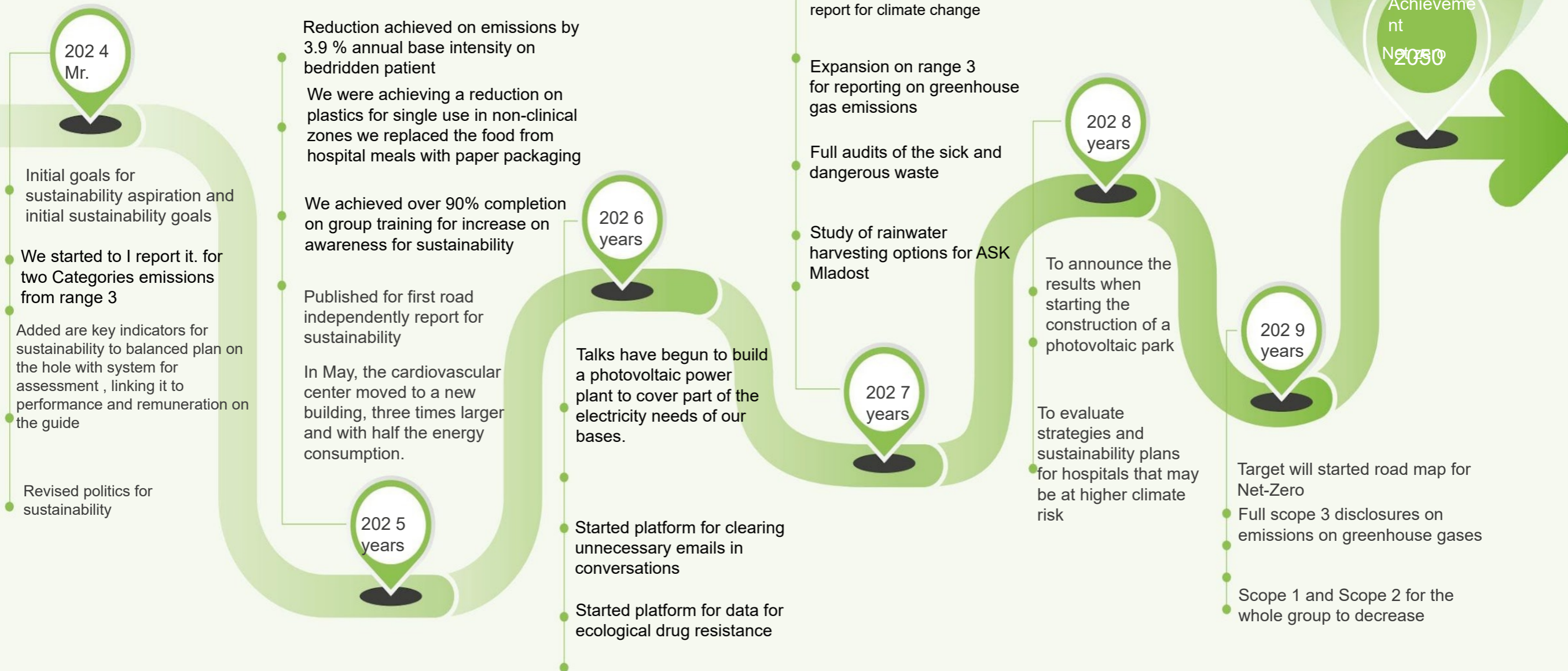
2 IPCC: Smith et al., 2021: Additional materials for energy budget on Earth , the opposite connection to climate and sensitivity to the climate .

In " Amendment" on Climate 2021: Basis on the physical sciences ". Contribution on Working group to The sixth report for assessment on Intergovernmental panel by amendment on climate , Masson-Delmotte et al . (eds .).

3 World economic forum . Here how healthcare can yes reduce carbon you imprint . Published on October 24 , 2022

4 Association on the American medical colleges . Microplastics are in all us . What means this for our health ?

Stages and ambitions



Our approach



Management on waste and water

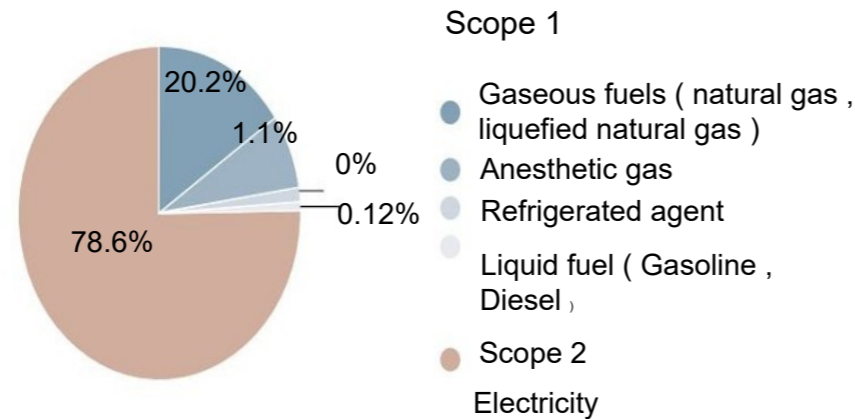
The human health is inseparable related with health on the climate . Therefore we manage emissions , energy , waste and water through specific actions that protect as patients and the environment environment .

ENVIRONMENTAL IMPACT AND ACTIONS Emissions and energy management

Our profile on emissions as supplier of health services



Emissions on greenhouse gases from scope 1 and scope 2 for 2024



* Rated on basis on Healthcare without harm .
Health Care and Climate imprint . Published on September 23 , 2019
<https://noharm-global.org> .

Scope 1 Direct emissions
Our feeds from Scope 1 is measure on basis on consumption on fuel and the unorganized emissions from anesthetic gases and refrigerants agents . Scope 1 represents 22 % of our emissions on greenhouse gases from Scope 1 and 2. Emissions related to anesthetic gas , occupy 8 % of emissions us from Range 1 and 2, whichever is lower share compared to profile from 2023 by 9%.

Scope 2 Indirect emissions
The emissions from Scope 2 is measure mainly from consumption on electricity and , where applicable , from the central heating . This will provide clearer picture on our efforts for reduction on emissions , while we pass to more energy sources . We we are strongly aware for the necessity from further reduction on the general us emissions and we remain committed to achieving on Net-zero emissions by 2050

Scope 3 Indirect emissions (chain for supplies)
Recognizing that emissions from Range 3 probably constitute at least 70%* of the general us profile on emissions , we we strengthen the efforts you for determination on the base line on emissions from Scope 3. This will us allow yes we have clearer approach for this what we can yes we will do for future efforts for reduction . We prioritize the gathering on data and measurements in the categories that were rated as essential for our imprint from Scope 3:
Purchased goods and services (Category 1) , Capital goods (Category 2)
Fuel and energy related activities (Category 3) Waste generated at activity (Category 5) Official trips (Category 6) – already is announced Travel on employees to work – Category 7
Investments (Category 15)

Emissions and management on the energy

Building on on the healthy foundations established since 2022 , we we continue yes we embed emissions - related indicators for efficiency in our balanced system for indicators for the whole group .

We focus is on acceleration on progress to the achievement on our goals for emissions from Scope 1 and 2 to 2027 , as at the same time we continue yes we improve the efforts you for output level for emissions from Scope 3.

Our approaches for measurement is lead from The protocol for greenhouses gases .



Our approach

ENVIRONMENTAL IMPACT AND ACTIONS

The pure environment is part from quality care.
Therefore we manage waste and water so that yes we protect health on people , yes we are decreasing the risks and yes we provide safe hospital environment in all ours objects .

ENVIRONMENTAL IMPACT AND ACTIONS

Emissions and energy management

Management on waste

Our approach to management of waste gives priority on compliance on regulatory requirements , the reduction on sources and recycling .

Besides the compliance , we is we strive to continuous improvement of processes , such as we use data for improvement on efficiency and reduction on the quantities waste . This includes initiatives for reduction of waste from packaging , improvement on the separate collection and promotion on awareness on the staff .

Through implementation on the best practices for management of waste in our facilities , we is we strive yes reduce to minimum ecological you footprint , like while maintaining high standards for care of the patients .

All hazardous waste is handed over to specialized companies for disposal.



Management on the waters

The reliable one access to clean Water is critical. for quality healthcare .

Through effectively management on aquatic resources we we guarantee stable water supply , high hygienic standards and continuity on medical services , us help yes defensible

the patients from risks associated with shortages on water , and yes provide safe environment for treatment .

In our new ASK Vitosha base, we built a system for collecting rainwater in tanks.

The collected water is used to water our green areas .

The Mladost base is investigating the possibilities for installing similar tanks and where they are located. most suitable place for installation.

Wastewater treatment plants have been built on the Vitosha base, where sewage Water is purified and only then discharged into the sewer.



Our approach

- Climate risks and opportunities
- Responsible sourcing

So as the amendment on climate continues yes changes the conditions on the environment environment , for us is exceptional important yes strengthen our sustainability , such as we guarantee that we can to maintain the provision of health care on background as on both the immediate and the long-term climatic challenges . Our commitment is extends beyond management on direct impacts ; we also so is we strive yes we use the opportunities that support our goals for sustainability . In 202 5 we started yes we improve our sustainability on climate through strategic ratings on risk , planning on scenarios and sustainable supply , which us help yes is let 's prepare and is we adapt to the changing one is climate .

CLIMATE RESILIENCE

Climate control risks and opportunities

In order to we manage effectively climate - related risks , we them we categorize on physical risks arising from from climatic dangers , and risks from transitions related to the global transition to low-carbon economy .

Our analysis on the physical risk I take considering as sharp risks , such as extreme meteorological phenomena causing sudden disorders , both chronic risks , including gradual changes in temperature and patterns on rainfall , providing readiness as for immediate , as well as for long-term impacts .

We started to we analyze potential future climatic scenarios , for yes identify physical risks as floods , extreme heat , extreme rains and shortages on water .

The approach examines row temperature results related to the global net zero increase on emissions (increase by 1.5-2°C) to lack on significant changes in reduction on emissions (increase by 4-5°C). This will us help yes we take informed solutions for this how yes defensible the activity you are .

What's up ? refers to the risks associated with the transition , we begin yes we study the consequences from working in an environment where stricter actions in the field on climate , including the inflated regulatory and public expectations , can yes require significant operational adaptations .

These analyses will us help yes determinable priority areas for action and yes develop adaptive strategies for reaction on the changing is climatic conditions .

Type and description on the risk	
<h3>PHYSICAL RISKS</h3>	
<p>SHARP</p> <p>Sudden , short-term events resulting from from extreme meteorological conditions that violate the activity .</p>	<ul style="list-style-type: none"> •The extreme rainfall and flooding can disrupt access to hospitals and yes damage critical infrastructure . The hot ones waves can yes load the cooling systems , yes increase energy needs , yes influence on comfort and safety on the patients and overload workload them .
<p>CHRONIC EN</p> <p>Long-term , gradual environmental changes environment , which create permanent operational challenges .</p>	<ul style="list-style-type: none"> •The rising ones is temperatures increase energy needs for cooling . • The shortage on water influences on maintenance on the establishments and the care for the patients .
<h3>TRANSITION RISKS</h3>	
<p>POLITICS</p> <p>The Changers is ecological regulations can yes require stricter standards for emissions , which will increase the costs for compliance on requirements .</p>	<ul style="list-style-type: none"> •New policies imposing reduction on emissions these standards for energy efficiency , management on waste and consumption on water in health facilities restaurants .
<p>REPUTATION</p> <p>Interested countries , including patients , Regulators and investors expect proactive actions in the field on the climate .</p>	<ul style="list-style-type: none"> •Patients seeking ecologically responsible health specialists .
<p>The above categories risk and examples are selection from preliminary risks identified at the beginning in 2024</p>	

Responsible supply

Resistance to the amendment on climate also requires the construction on climatic compliant chain for deliveries . Through responsibly supply is we strive yes we work with suppliers who share our values for sustainability and have stable practices for adaptation to the climate .

With **our new Global politics** for responsibly supply , we is we strive yes we guide and ensure that the chain for supplies on our The company is ethical , sustainable and socially responsible. responsible .

Our The goal is to we work more closely with suppliers committed to sustainable practices , which also will help for reduction on the risks associated with climate change disturbances throughout us chain for supplies .

Our efforts for ecologically responsibly supply include collaboration with suppliers for improvement on transparency on the data for emissions , promotion on sustainable product options and integration on criteria focused on the climate , in our standards for public orders . Through strengthening on sustainability on the chain for supplies and support on the practices for sustainable supply , we no only we are decreasing the potential interruptions , but we also contribute for the circular economy , strengthening the commitment you for conservation on the environment environment .

Our presentation

	2024	2025
Title on the costs for local suppliers *	98.7%	99.6%

* Locals suppliers is refer to companies or persons who provide products or services on .

Our progress and highlights



ENVIRONMENTAL IMPACT AND ACTIONS

Through 2025 we achieved progress in implementation on the commitments you for reduction on impact us on the environment environment through targeted actions for reduction on emissions , initiatives for energy efficiency , reduction on plastics for single use in non-clinical areas and better management of waste.

1 . Reduction on the use on desflurane

The contribution of desflurane for global warming , we we established internal key indicators for Desflurane , an anesthetic gas , is 2500 times stronger from carbon dioxide for warming on our planet . The efforts brought to discount of up to 55% throughout us activity .

2. N approvals have been proposed in the energy sector efficiency

Expecting is these modernizations yes be 10 % more efficient , which will help for reduction on energy intensity and operational costs , as well as strengthening on sustainability on the facilities to the growing energy needs .

3. IncrEased implementation on renewable energy sources

The transition to more renewable energy sources is key in our road to decarbonization . Our efforts for construction on solar panels on roofs also are ongoing . A study is being conducted on the necessary capacities and terrain for the construction of a photovoltaic power plant that will provide a large percentage of the electricity needs of the Acibadem City Clinic group.

4. Improvement on the practices for management of waste

After the successful implementation on measures for reduction on plastics for single use in non-clinical zones , we are expanding the efforts you and to the remaining clinical areas

5. Encouragement on the change in culture

The shared commitment begins with shared understanding . In 2025 we continued yes is we focus on row activities for training and communication in the field on sustainability , as for example :

- Training : We hired with ours teams by finance and public orders , for yes let's hold segmented training , focused on topics as introduction in financial impact on climatic risks and opportunities , as well as sustainable public orders .



Through 2026 the year is we focused on deepening on understanding us for climate - related risks and opportunities , such as at the same time we strengthened the practices for sustainability on our chain for supplies . These efforts are key for construction on sustainability in our operations and for coordination with our long-term ecological goals .

2. Analysis on climatic scenarios

Through 2026 we started our efforts for analysis on scenarios for physical risks . This current work includes study on potential vulnerabilities to physical risks for our hospitals . Such vulnerabilities include risks as floods , extreme rainfall and hot waves , as well as chronic risks as shortage on water and temperature fluctuations .

3. Global politics for responsibly supply

In 2025 we introduced our new Global politics for responsibly supply , such as we placed clear expectations to the suppliers yes observe and perceive climatic and social responsible practices . I will let's continue yes we integrate sustainability in our processes on public orders , such as is we focus on the coordination on our chain for deliveries with our environmental and climate goals .



Our progress and highlights

We made good progress on our planet-related goals in 2024. Against a backdrop of a 2.5% annual increase in hospital bed days compared to 2023, emissions decreased by 0.7%, bed-day emissions intensity decreased by 3.2%. Anesthesia-related emissions decreased by 16.9%, and natural gas consumption decreased by 7.2%.

In order to achieve zero net emissions by 2050, it is necessary yes let's also establish the baseline line for emissions on greenhouse gases from Range 3, before yes be certain scientific justified goals . We started to we report for emissions on greenhouse gases from Scope 1 and 2 since 2022 and we have included two categories from Scope 3 in 2023. For 2024, we expanded number on the categories from Scope 3, for which we report , for yes include Category 3 : Activities related to fuels and energy .

Goals	Objectives and indicators	2023	2024	2025
For yes is limit range 1 and 2 Emissions on greenhouse gases at Basic level for 2023 by 2025 In particular on growth on ASK	General range 1 and 2 Emissions on greenhouse gases , metric	2239.5 t CO2e Range 1: 497.1 Range 2: 1742.4	2323.4 t CO2e Range 1: 497 .1 Range 2: 1826.3	2254.1 t CO2e Range 1: 451.3 Range 2: 1802.7
Yes is reduce from year on year Range 1 and 2 of Intensity on emissions on greenhouse gases on day bed for patient	Intensity on emissions , kilogram of CO ₂ e per day for bed on the patient	21.16 kg CO ₂ e /l day pat.	20.87 kg CO ₂ e /l day pat.	18.39 kg CO ₂ e /l day pat.
Long-term goal: To achieve net zero emissions by 2050.		Established Scope 1 and 2 Greenhouses gases		
Reduction of the use on one-time plastic with 90% in non-clinical areas in 2023	Percentage reduction On the plastic for single use in non-clinical areas	basic line on emissions	Reported 2 of 2 For Range 3 categories	Reported 2 of 2 For Range 3 categories

* Our goal for readiness for SBTi until 2025 is intermediate stage by the road towards Net-Zero by 2050, so as scientific the justified goals require full basic line on emissions from Scope 1, 2 and 3. So as initially were available only partial data , this step by step approach guarantees that we collect the necessary insights for formalization on goals based on evidence .

Reduction on greenhouses gases in operating rooms halls : Acibadem and IHH Malaysia ask the pace

In 2024, IHH Healthcare achieved bigger commitment for reduction on impact on the environment environment from anesthetics gases , such as desflurane – powerful greenhouse gas – was in the center on these efforts . Famous with significantly the higher one you potential for global warming (GWP) compared to alternatives , desflurane has been determined as key source on health care emissions .

Leading in these efforts for reduction , operations on Acibadem in Turkey and Bulgaria achieved remarkably reduction from **55% of annual base on emissions on desflurane** .

This one success is owes on localized approaches that included close cooperation with the anesthesiology teams and comprehensive training on the staff regarding sustainable anesthesiological practices for without problems application on the changes




The activities on Acibadem in Turkey serve as convincing case studies for by – the wide one organization . As demonstrate that the reduction on emissions can yes be achieved without compromise with care for the patients , those two the market are placed the standard for sustainable anesthesia practices . These efforts are part from the wider one strategy for reduction on emissions from Scope 1.

While we upgrade on these successes , achievements us remind that the purposeful action based on localized strategies and cooperation, can yes led to significant progress to climatic accordingly healthcare .

Look forward

With a look to the future , we we stay committed to integration on the ecological sustainability in everyone aspect from our activity . As is we deal with emissions , waste, risks and supply with strategic and grounded on data approach , we we are ready yes achieve significant progress to healthier and more sustainable future for our patients , communities and the planet . Also so will gradually we accept The standards for disclosure on sustainability under IFRS , starting with IFRS S2 “ Climate - related Disclosures ” from fiscal year 2025 onwards .



Impact on the environment environment and actions

Reduction on emissions from Scope 1
I will let's continue the efforts you for reduction on emissions on desflurane on our basic markets .
through bringing on clinical practices in line with the objectives for sustainability . These actions aim significantly reduction on impact on anesthetics gases on the environment environment .

Acceleration on acceptance on renewable energy
Expecting is the large-scale project for solar energy in Turkey , whose commissioning is planned for 2025, yes provide up to 80% of annual energy needs on Turkey . The installations on solar panels will continue and in Bulgaria.

Development of baseline emissions levels by Scope3
We will focus on improving our understanding of Scope 3 emissions in key categories such as purchased goods and services, capital goods, and waste generated by operations. These efforts will lay the foundation for developing targeted strategies to address emissions hotspots across our value chain.

Conduct on audits of waste
I will let's hold complete audits of waste with external suppliers throughout the country us hospital network , for yes we understand better the sources on waste and the problems with the mixing them .
These insights will direct targeted interventions for improvement on the fields on recycling and reduction on the general volume of waste.



Sustainability on the amendment on climate

Alignment with the standards for IFRS S1 and S2 reporting
In line with the increased requirements for reporting on sustainability , will bring our disclosures in accordance with standards . This alignment will includes complete ratings as on both physical and climate - related risks , ensuring that our reporting answers on regulatory expectations and reflects our commitment for transparency and sustainability .

Progress on the responsible supply
Building on our global politics for responsibly supply , will introduce sustainability - related assessment in the process on choice on suppliers .
Through use on tools for analysis on public orders , we is we strive yes identify hot points on emissions and yes expandable cooperation with suppliers , for yes accept sustainable alternatives for the areas on public large orders impact .



Карта с резултати на енергийните разходи и управление на водата и отпадъците

Потребление на енергия	2023	2024	2025	Изхвърляне на отпадъци	2023	2024	2025
Общо консумирана енергия (kWh)	6951874,10	7139508,33	6761786,89	Общо количество отпадъци (метрични тонове)	388,24	347,10	257,96
– Електричество от мрежата	4371590,00	4519275,00	4460890,00	Общо опасни отпадъци 1 (метрични тонове)	146,96	107,02	100,46
– Природен газ, градски газ, втечен нефтен газ	2562224,101	2610200	2292569,22	Общо неопасни отпадъци 2 (метрични тонове)	241,28	240,08	157,50
– Бензин и дизел	18060,00	10033,33	8327,67	– Рециклирани или отклонени от депото	13,53	8,23	14,45
– Възобновяема енергия (слънчеви панели на покрива, възобновяема енергия извън обекта)	0	0	0	– Изгорени	146,96	107,02	100,46
Интензитет на потреблението на енергия (kWh/ден на легло на пациент)	84,41	81,59	68,98	– Сметище	227,75	231,85	143,05

Емисии на парникови газове (ПГ)	2023	2024	2025	Потребление на вода	2023	2024	2025
Общи емисии на парникови газове от обхват 1 и 2 (kgCO _{2e})	2239538,30	2323416,15	2254089,68	Общо количество използвана вода (м ³) 4	12351	15318	14831
1.Емисии на парникови газове от обхват 1 (kgCO _{2e})	497138,55	497086,73	451354,81	Интензитет на потреблението литри/леглоден пациент	149,97	175,06	151,30
– Анестетични газове	21460,80	26565,64	38221,00				
-Течни горива – дизел, бензин	4847,71	2693,17	2235,33	Легло-ден бр.за година	2023	2024	2025
- Газови горива – пропан бутан, природна газ	470830,04	467827,92	410898,48	Брой докоснати животи и съдби в АСК УМБАЛ	82354	87500	98023
2,Емисии на парникови газове от обхват 2 (kgCO _{2e})	1742399,75	1826329,41	1802734,87	НР: - Не е докладвано			
Интензитет на емисиите от обхват 1 и 2 (kgCO _{2e})	21,16	20,87	18,39	Сумата на цифрите може да не е точна поради разлики в закръгляването.			
Общи емисии от Обхват 3 (kgCO _{2e})	7465127,66	7744720,49	7513632,26	1 Медицинските отпадъци са >95% от нашия отпечатък от опасни отпадъци. Всички опасни отпадъци се управляват в съответствие с местните регулаторни изисквания и			
– Категория 3: Дейности, свързани с горива и енергия, които не са включени в Обхват 1 или Обхват 2				2 Регулаторните изисквания за събиране на данни се различават в различните страни.			
- Категория 6: Службни пътувания				3 Данните за опасните отпадъци за 2023 г. са преизчислени.			
- Категория 7: Пътуване до работа на служителите				4 Цялата използвана вода е общинска питейна вода.			

ΛCIBADEM

CITYCLINIC

УНИВЕРСИТЕТСКА БОЛНИЦА

Thank you for your attention!